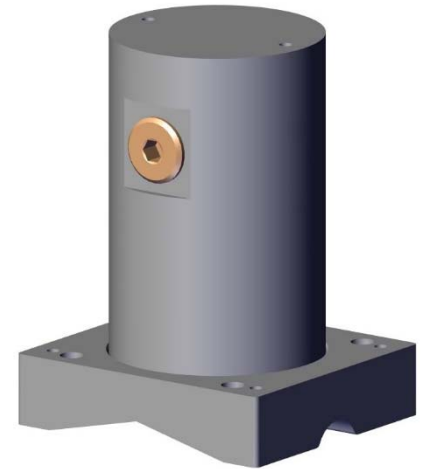


Instrument datasheet

ClampOn DSP Leak Monitor

1 General			Note
1.1	Model name	ClampOn DSP Leak Monitor	
1.2	Model number	TSE.DS2I.SA00.A10	
1.3	Explosion protection principle	Intrinsically safe, Ex i	
1.4	Serial number	YY-MM-XXXXX, unique for each unit	1

2 Physical			
2.1	Dimensions (ø × h)	80 mm × 144 mm [3.1 in × 5.7 in]	
2.2	Enclosure material	Stainless steel 316L	
2.3	Enclosure protective coating	None, not certified with any type of coatings	
2.4	Weight (sensor only)	2.2 kg [4.9 lb]	
2.5	Weight (with mounting bracket)	3.2 kg [7.1 lb]	
2.6	Ambient temperature	See "Approvals & certification"	
2.7	Ingress protection	IP66/IP68 (1 meter for 24 hours), in accordance with IEC 60529	
2.8	Equipment marking	Metallised polyester certification label Stainless steel tag plate where applicable	
2.9	Cable entry configuration	1 off M20 × 1.5 ISO metric fitted with Ex blanking element by default	2
2.10	Cable gland	None by default	2
2.11	Cable length and type	None by default	2



3 Electrical			Note
3.1	Rated voltage (from a safety barrier), U_{dc}	24 V	3
3.2	Power consumption (typical/maximum), sensor + safety barrier (PSD 1001C)	1.9 W/ 2.2 W	
3.3	Electronics platform/generation	ClampOn DSP II	
3.4	Microprocessor	600 MIPS	
3.5	Non-volatile memory	8 MB	
3.6	Vibration accelerometer	3-axis MEMS	4

4 Operation			
4.1	Manner of operation	Real-time measurement	
4.2	Unit of measurement	Raw value	9
4.3	Technology	Passive ultrasonic using piezoelectric transducer	
4.4	Processing	DSP in sensor unit	
4.5	Calibration	All sensors are calibrated to a master signal at factory	
4.6	Design life	25 years	
4.7	Repeatability	Better than 1 %	
4.8	Flow conditions	Oil, water, gas, multiphase	
4.9	Minimum detectable leakage	Liquid: dP >3 bar [44 psi], gas: dP >1 bar [15 psi]	5
4.10	Pipe/valve material	All steel alloys	6

5 Signal			7
5.1	Signal types (galvanically isolated)	RS-485 and 4-20 mA	3
5.2	RS-485 (half duplex) protocol	Modbus RTU or proprietary DSP	8, 9
5.3	RS-485 baud rate	2.4 kbps to 115.2 kbps	
5.4	4-20 mA (passive, sink), 4-wire	Configurable raw value range up to 5 000 000. Default 0 to 500 000	8, 9

6 Installation			
6.1	Mounting	Mounting bracket clamped to pipe/valve by non-invasive, non-intrusive stainless steel clamping bands, or welded to pipe/valve surface. Sensor screws into the mounting bracket	6, 10
6.2	Terminal block connection data	0.5 mm ² to 1.5 mm ² [AWG 20 to AWG 16] conductor (stranded) cross section with ferrule with plastic sleeve	

Instrument datasheet

ClampOn DSP Leak Monitor



7 Approvals & certification		13
7.1	Hazardous area location approval	Zone 0, 1, 2 for ATEX/IECEX installations and Zone 0, 1, 2 or Division 1 for cULus (NEC/CEC) installations
7.2	ATEX certificate	Presafe 17 ATEX 9492X
7.3	ATEX marking	Ex II 1 G Ex ia IIB T4 Ga $-40\text{ }^{\circ}\text{C} \leq T_{\text{amb}} \leq +60\text{ }^{\circ}\text{C}$
7.4	ATEX ambient temperature range	$-40\text{ }^{\circ}\text{C} \leq T_{\text{amb}} \leq +60\text{ }^{\circ}\text{C}$
7.5	IECEX certificate	IECEX PRE 17.0009X
7.6	IECEX marking	Ex ia IIB T4 Ga $-40\text{ }^{\circ}\text{C} \leq T_{\text{amb}} \leq +60\text{ }^{\circ}\text{C}$
7.7	IECEX ambient temperature range	$-40\text{ }^{\circ}\text{C} \leq T_{\text{amb}} \leq +60\text{ }^{\circ}\text{C}$
7.8	cULus file number	E354507
7.9	cULus marking	Class I Division 1 Groups C, D T4 Class I Zone 0 AEx ia IIB T4 Ga Class I Zone 0 Ex ia IIB T4 Ga
7.10	cULus ambient temperature range	$-40\text{ }^{\circ}\text{C} \leq T_{\text{amb}} \leq +60\text{ }^{\circ}\text{C}$
7.11	CE marking in conformance with	2014/34/EU (ATEX Directive) and 2014/30/EU (EMC Directive)

- Notes**
1. Serial number breakdown: yy (year of manufacture), mm (month of manufacture), xxxxx (unique electronics ID).
 2. Various solutions available.
 3. Irrespective of whether in a hazardous or non-hazardous area, all signal and power connections to and from the sensor must be via certified safety barriers with intrinsically safe outputs in accordance with the Ex certificates' electrical data. Only use certified safety barriers supplied or recommended by ClampOn.
 4. For vibration measurement details, see instrument datasheet addendum. Vibration output is optional and not activated in instrument by default.
 5. Minimum leakage rate is 0.1 l/min [0.026 gal/min], depending on delta pressure (dP) across the leakage point.
 6. Sensor waveguide must have metal-to-metal contact with the pipe/valve surface.
 7. Factory configurable software parameters via RS-485 interface. May also be configured in-field by ClampOn authorised personnel.
 8. 4-20 mA only recommended for raw value trending. ClampOn recommends digital (Modbus RTU or DSP) output to enable leak calculation.
 9. Sensor's UOM is raw value. To calculate leak rate (l/min), send sensor raw value, (live) inlet pressure and valve status to a PC or PAC programmed with fluid type, valve type and inlet ID.
 10. Mounting bracket available in stainless steel (standard), carbon steel or duplex. Clamping bands available in stainless steel or Inconel.
 11. The ambient temperature (T_{amb}) marked on the equipment refers to the temperature of the surroundings, irrespective of any external source of heating, such as process temperature, or direct sunlight. If there is a risk the ambient temperature of the surroundings will exceed T_{amb} , steps must be taken to mitigate this risk, such as installing a sunshade, insulating the pipe, or moving the equipment to another location.
 12. See certificate and/or installation instructions for electrical parameters (for IS calculations), and specific conditions of use.
 13. The sensor may not be marked with all certificates at the same time.